

NORMAN LINDSAY GALLERY



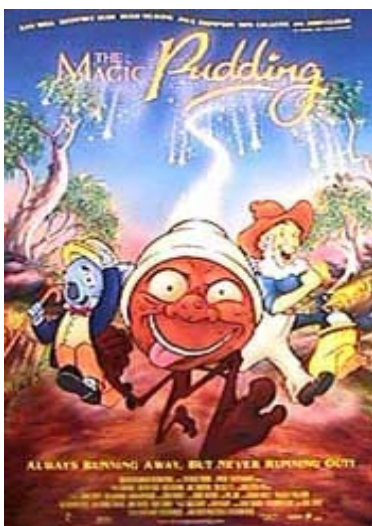
One of the world's best loved book is the *Magic pudding* written & illustrated by Norman Lindsay.

Set in extensive grounds, the single storey house with its external painting and etching studios was the home of Norman Lindsay (1879-1969), one of Australia's most controversial, exceptional and prolific artists. It was here that he created etchings, oils, watercolours, sculptures, the fine ship models which he made as a pastime, and where he wrote the children's classic, *The Magic Pudding*.

Over the years, Lindsay transformed his estate, adding classical colonnades and a Roman courtyard to the house, and sculpting exotic nymphs, satyrs and fountains to embellish the grounds

In 1901 he joined the staff of the Sydney Bulletin, a weekly newspaper. He drew caricatures, cartoons and illustrations on demand. Norman's association with contributions to the magazine lasted for over fifty years.

An interesting venue with something for everyone.



Activities

- Annual Jazz festival
- Children's Literature Festival
- Musical and family events

Experiences

The House, presented as the home of the Lindsay family.

The Gallery, with its changing exhibitions, painting and etching studios presented as they were.

The Gardens, extensive grounds with statuary and bush walks.

Facilities

- National Trust Gift Shop
- Award winning Café.
- Plenty of Parking.

Disabled access

- Easy access to grounds.
- Some steps to access house.

Admission charges

Opening hours

Daily from 10am-4pm

(closed Christmas Day)

Entry fees:

- Adults \$9
- Concession \$6
- Children (6-12 yrs) \$4
- Families - \$22

This is a National Trust property and members are free of charge (charge added for special events and exhibitions).

CONTACT INFO

14 Norman Lindsay Crescent, Faulconbridge via Springwood Blue Mountains

Phone (02) 4751 1067

Fax (02) 4751 5845

Email nlg@hermes.net.au

Web www.normanlindsay.com.au

NORMAN LINDSAY GALLERY

SCHOOL HOLIDAYS BOREDOM BUSTERS

The Norman Lindsay Gallery has '**Magic of the Sea**' running until the end of February 08.

This exhibition features Lindsay's ship models as well as paintings and sketches of the high seas, pirates and mermaids.

We are holding 2 x **Life Drawing summer schools** during January

Beginners 2nd - 5th January 2008

Advanced 8th -11th January 2008

Story telling

'Tales and Tunes' is at for children Saturday 12th January 2008 at 1pm

and adults at 2.30pm

This is complimentary with normal admission charges into the property.

Australia Day

we will have free admission into the property and guided bushwalks